

SUBMITTAL TO THE BOARD OF SUPERVISORS
COUNTY OF RIVERSIDE, STATE OF CALIFORNIA

112 B



FROM: TLMA – Transportation Dept. SUBMITTAL DATE: May 23, 2003

SUBJECT: **TRACT 28622**
A Schedule "A" Subdivision in the Eastvale Area
ONE YEAR GUARANTEE AND MAINTENANCE AGREEMENTS

RECOMMENDED MOTION: That the Board approve the attached One Year Guarantee and Maintenance Agreements as approved by County Counsel and authorize the Chairman to sign these agreements for Tract 28622.

BACKGROUND: Improvements have been completed or are approaching completion on this project. Western Pacific Housing – Providence I, LLC desires to enter into Maintenance Agreements to guarantee a one year maintenance of the improvements and has submitted agreements and securities which have been approved by County Counsel.

REVIEWED BY EXECUTIVE OFFICE
George A. Johnson
DATE 5/22/03

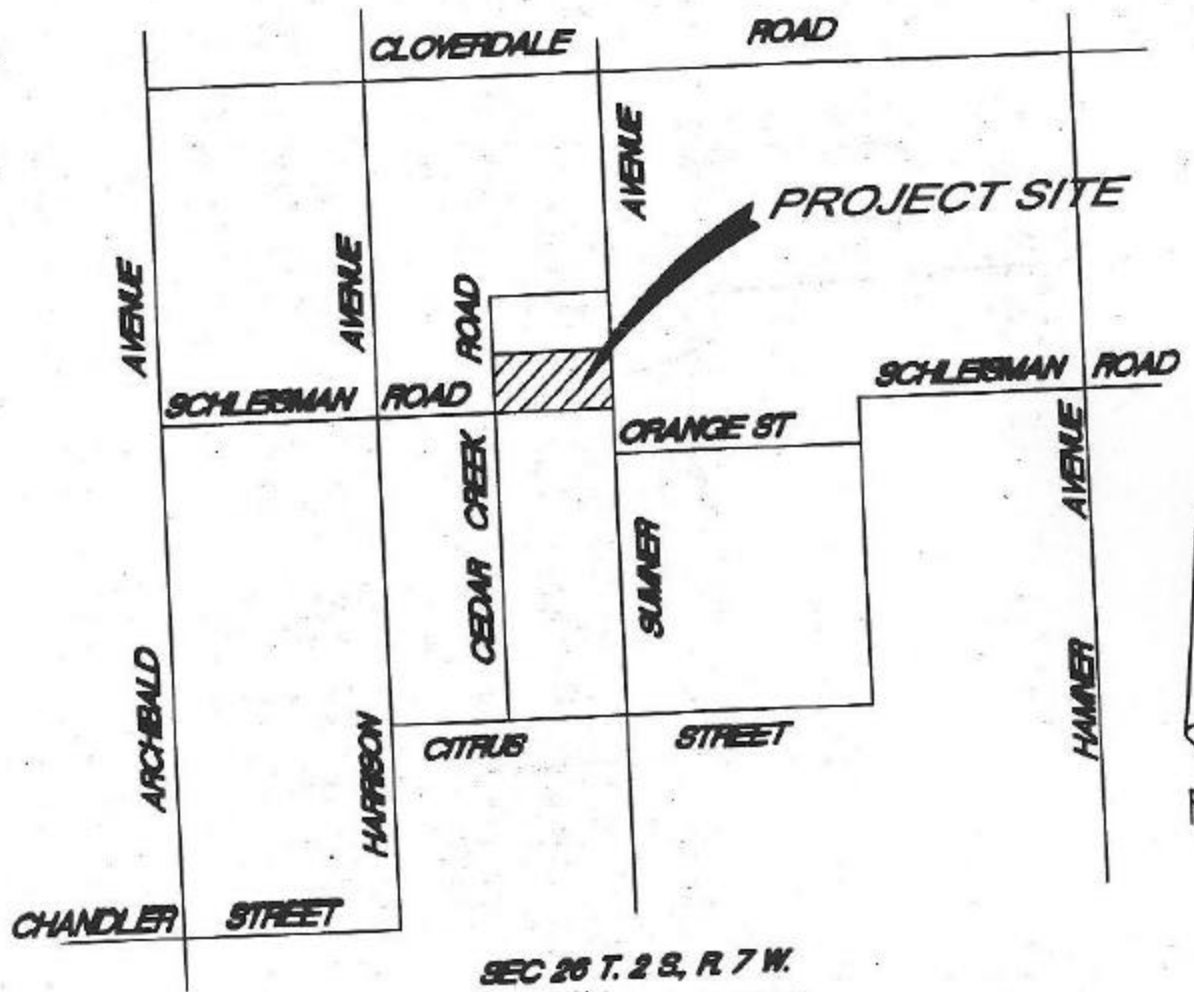
George A. Johnson
For

HS:lf
Submittals: Vicinity Map
Road/Drainage Maintenance Agrmts
Water System Maintenance Agrmts
Sewer System Maintenance Agrmts

George A. Johnson
Director of Transportation

Department Recommendation: Consent Policy
Per Executive Office: Consent Policy

STREET IMPROVEMENT TRACT



SEC 26 T. 2 S., R. 7 W.
VICINITY MAP

N.T.S.

(SEE SCHLEISMAN ROAD
PLANS I.P. 990010 / MS 3757
TRANS. FILE NO. 917-44)

SCHLEISMAN

RIVER

97 96 95 9